



**COMMERCIAL**



**RESIDENTIAL**



**ECOLOGICAL**

*Erosion Control Blanket understands  
the importance of producing the highest quality  
and most effective rolled erosion control products for you.*

*Our rolled erosion control products  
are specifically designed to protect both seed and soil  
from the erosive effects of wind and water.*



**Erosion Control  
BLANKET**

**P R O D U C T S**



# COMMERCIAL

ECB.com's Commercial line provides a mechanically stabilized form of immediate cover, functioning as a barrier against both the detachment and transportation phases of the erosion process until vegetation or reinforced vegetation assumes this function. All ECB.com commercial products have been specifically developed and engineered to meet nearly every environmental extreme, and do so economically. All of our Commercial products are available in 8' or 16' widths and Big Daddy rolls for your convenience.

## PRODUCTS

**C: COMPOSITION**  
**P: PERFORMANCE**

**STANDARD ROLL**

**W: WIDTH L: STANDARD LENGTH**

**"BIG DADDY" ROLL**

**A: AREA WT: WEIGHT**

SHORT TERM ≤ 12 MO.



**S31**

**C:** single sided weed free  
100% wheat straw blanket  
1/2 lb/sy (270g/m<sup>2</sup>) weight  
**P:** slopes ≤ 3:1 (h:v)  
channels 1.5 lbs/ft<sup>2</sup> (72 Pa)

**W:** 2.44m (8 ft) 4.88m (16 ft)  
**L:** 34.3m (112.5 ft) 34.3m (112.5 ft)  
**A:** 83.61m<sup>2</sup> (100 yd<sup>2</sup>)  
167.23m<sup>2</sup> (200 yd<sup>2</sup>)  
**WT:** 24kg (52 lb) 48kg (104 lb)

2.44m (8 ft) 4.88m (16 ft)  
137.2m (450 ft) 137.2m (450 ft)  
334.4m<sup>2</sup> (400 yd<sup>2</sup>)  
668.8m<sup>2</sup> (800 yd<sup>2</sup>)  
96kg (208 lb) 192kg (416 lb)

SHORT TERM ≤ 12 MO.



**S32**

**C:** double sided weed free  
100% wheat straw blanket  
1/2 lb/sy (270g/m<sup>2</sup>) weight  
**P:** slopes ≤ 2:1 (h:v)  
channels 1.75 lbs/ft<sup>2</sup> (84 Pa)

**W:** 2.44m (8 ft) 4.88m (16 ft)  
**L:** 34.3m (112.5 ft) 34.3m (112.5 ft)  
**A:** 83.61m<sup>2</sup> (100 yd<sup>2</sup>)  
167.23m<sup>2</sup> (200 yd<sup>2</sup>)  
**WT:** 24kg (52 lb) 48kg (104 lb)

2.44m (8 ft) 4.88m (16 ft)  
137.2m (450 ft) 137.2m (450 ft)  
334.4m<sup>2</sup> (400 yd<sup>2</sup>)  
668.8m<sup>2</sup> (800 yd<sup>2</sup>)  
96kg (208 lb) 192kg (416 lb)

EXTENDED TERM ≤ 24 MO.



**SC32**

**C:** double sided 70% straw and  
30% coconut fibers blanket  
1/2 lb/sy (270g/m<sup>2</sup>) weight  
**P:** slopes ≤ 1.5:1 (h:v)  
channels 2.0 lbs/ft<sup>2</sup> (96 Pa)

**W:** 2.44m (8 ft) 4.88m (16 ft)  
**L:** 34.3m (112.5 ft) 34.3m (112.5 ft)  
**A:** 83.61m<sup>2</sup> (100 yd<sup>2</sup>)  
167.23m<sup>2</sup> (200 yd<sup>2</sup>)  
**WT:** 25kg (54lb) 50kg (108lb)

2.44m (8 ft) 4.88m (16 ft)  
171.5m (562.5 ft) 171.5m (562.5 ft)  
418m<sup>2</sup> (500 yd<sup>2</sup>)  
836.1m<sup>2</sup> (1000 yd<sup>2</sup>)  
125kg (270lb) 250kg (540lb)

LONG TERM ≤ 36 MO.



**C32**

**C:** 100% coconut fibers sewn  
between two heavy nets  
1/2 lb/sy (270g/m<sup>2</sup>) weight  
**P:** slopes ≤ 1:1 (h:v)  
channels 2.25 lbs/ft<sup>2</sup> (108 Pa)

**W:** 2.44m (8ft) 4.88m (16ft)  
**L:** 41.1m (135ft) 41.1m (135ft)  
**A:** 101.7m<sup>2</sup> (120yd<sup>2</sup>)  
203.4m<sup>2</sup> (240yd<sup>2</sup>)  
**WT:** 30kg (67lb) 60kg (134lb)

2.44m (8ft) 4.88m (16ft)  
171.5m (562.5ft) 171.5m (562.5ft)  
418m<sup>2</sup> (500yd<sup>2</sup>)  
836.1m<sup>2</sup> (1000yd<sup>2</sup>)  
127kg (279lb) 254kg (558lb)

PERMANENT > 36 MO.



**P42**

**C:** 100% polypropylene fibers  
sewn between a 25g/m<sup>2</sup>  
and 14g/m<sup>2</sup> net  
3/4 lb/sy (370g/m<sup>2</sup>) weight  
**P:** slopes ≤ .5:1 (h:v)  
channels 8 lbs/ft<sup>2</sup> (384 Pa)  
maximum vegetated

**W:** 2.44m (8ft) 4.88m (16ft)  
**L:** 25.7m (84.4ft) 25.7m (84.4ft)  
**A:** 62.7m<sup>2</sup> (75yd<sup>2</sup>)  
125.4m<sup>2</sup> (150yd<sup>2</sup>)  
**WT:** 28kg (61lb) 56kg (122lb)

2.44m (8ft) 4.88m (16ft)  
102.8m (337.5ft) 102.8m (337.5ft)  
250.8m<sup>2</sup> (300yd<sup>2</sup>)  
500m<sup>2</sup> (600yd<sup>2</sup>)  
34kg (74.6lb) 68kg (149.2lb)



# RESIDENTIAL

Our Residential line of rolled erosion control products were designed specifically for rapid degradation once vegetation establishment occurs on home lawns, boulevards, or anywhere you expect trouble-free mowing in less than three months (depending on environmental extremes). Both the ultra short-term UVD blankets are designed and manufactured to ensure rapid breakdown. We utilize only rapid UV degrading nettings (white) and thread in our UVD series to better ensure their consistent breakdown for trouble-free mowing and maintenance.



# ECOLOGICAL

ECB.com's Ecological line of ECBs has been specifically designed and engineered using 100% biodegradable materials for ecologically sensitive areas like wetlands, stream bank stabilization, and forest lands -- where nature demands natural and you demand performance. The BD series provides effective erosion control for up to 24 months until vegetation can provide the appropriate level of erosion control. Additionally, we utilize only Leno woven nettings to ensure consistent quality and performance while providing all the environmental advantages of a woven net.

## PRODUCTS

C : COMPOSITION  
P : PERFORMANCE

STANDARD ROLL

"BIG DADDY" ROLL

W: WIDTH L: STANDARD LENGTH A: AREA WT: WEIGHT

SHORT TERM ≤ 12 MO.



**S31BD**

C : weed free 100% wheat straw sewn to one loose-weave jute net with a shear-enhancing, double reinforced lemo weave that allows for expanding net hole size  
P : slopes ≤ 3:1 (h:v)  
channels 1.5 lbs/ft<sup>2</sup> (72 Pa)

W : 2.44m (8 ft)	2.44m (8 ft)
L : 34.3m (112.5 ft)	137.2m (450 ft)
A : 83.61m <sup>2</sup> (100 yd <sup>2</sup> )	334.4m <sup>2</sup> (400 yd <sup>2</sup> )
WT : 27.2kg (60 lb)	108.8kg (240 lb)

Biodegradable (BD) not available in 16-foot wide rolls

SHORT TERM ≤ 12 MO.



**S32BD**

C : weed free 100% wheat straw sewn between 2 loose-weave jute nets with shear-enhancing, double reinforcing strips on a lemo weave that allows for expanding net hole size  
P : slopes ≤ 2:1 (h:v)  
channels 1.75 lbs/ft<sup>2</sup> (84 Pa)

W : 2.44m (8 ft)	2.44m (8 ft)
L : 34.3m (112.5 ft)	137.2m (450 ft)
A : 83.61m <sup>2</sup> (100 yd <sup>2</sup> )	334.4m <sup>2</sup> (400 yd <sup>2</sup> )
WT : 30.8kg (68 lb)	123.4kg (272 lb)

Biodegradable (BD) not available in 16-foot wide rolls

EXTENDED TERM ≤ 18 MO.



**SC32BD**

C : weed free 70% straw and 30% coconut fibers sewn between 2 loose-weave jute nets with shear-enhancing, double reinforcing strips on a weave that allows for expanding net hole size  
P : slopes ≤ 1.5:1 (h:v)  
channels 2.0 lbs/ft<sup>2</sup> (96 Pa)

W : 2.44m (8 ft)	2.44m (8 ft)
L : 34.3m (112.5 ft)	171.5m (562.5 ft)
A : 83.61m <sup>2</sup> (100 yd <sup>2</sup> )	418m <sup>2</sup> (500 yd <sup>2</sup> )
WT : 30.8kg (68 lb)	154.2kg (340 lb)

Biodegradable (BD) not available in 16-foot wide rolls

LONG TERM ≤ 24 MO.



**C32BD**

C : 100% coconut fibers sewn between 2 loose-weave jute nets with shear-enhancing, double reinforcing strips on a weave that allows for expanding net hole size  
P : slopes ≤ 1:1 (h:v)  
channels 2.25 lbs/ft<sup>2</sup> (108 Pa)

W : 2.44m (8 ft)	2.44m (8 ft)
L : 34.3m (112.5 ft)	171.5m (562.5 ft)
A : 83.61m <sup>2</sup> (100 yd <sup>2</sup> )	418m <sup>2</sup> (500 yd <sup>2</sup> )
WT : 30.8kg (68 lb)	154.2kg (340 lb)

Biodegradable (BD) not available in 16-foot wide rolls



FOR THE MOST COMPREHENSIVE AND UP-TO-DATE INFO ON OUR PRODUCTS OR ASSISTANCE IN SELECTING THE MOST COST-EFFECTIVE RECP FOR YOUR PROJECT, VISIT US AT [EROSIONCONTROLBLANKET.COM](http://EROSIONCONTROLBLANKET.COM) OR [ECB.CA](http://ECB.CA).

ULTRA SHORT TERM ≤ 3 MO.



**S31UVD**

C : single sided weed free 100% wheat straw blanket 1/2 lb/sy (270g/m<sup>2</sup>) weight  
P : slopes ≤ 3:1 (h:v)  
channels 1.5 lbs/ft<sup>2</sup> (72 Pa)

W : 2.44m (8 ft)	4.88m (16 ft)	2.44m (8 ft)	4.88m (16 ft)
L : 34.3m (112.5 ft)	34.3m (112.5 ft)	137.2m (450 ft)	137.2m (450 ft)
A : 83.61m <sup>2</sup> (100 yd <sup>2</sup> )	167.23m <sup>2</sup> (200 yd <sup>2</sup> )	334.4m <sup>2</sup> (400 yd <sup>2</sup> )	668.8m <sup>2</sup> (800 yd <sup>2</sup> )
WT : 24kg (52 lb)	48kg (104 lb)	96kg (208 lb)	192kg (416 lb)



## CHANGING THE FACE OF THE EROSION CONTROL INDUSTRY

Ever since our founding in Riverton, Manitoba, Canada, innovation and quality in rolled erosion control products are what you can expect from ErosionControlBlanket.com. The ErosionControlBlanket.com team understands the importance of producing quality erosion control blankets and turf reinforcement mattings. Our premium line of blankets and mats are designed to protect grass seed and topsoil from the forces of erosion. All our equipment is state of the art and is completely computer controlled. This guarantees you a blanket/mat of even quality throughout and a wide variety of RECPs. ErosionControlBlanket.com products are distributed throughout North America; our machine was the first in North America to manufacture erosion control blankets and mats from 4 to 16 feet wide. Many of our products contain golden summer wheat straw.

ErosionControlBlanket.com also produces some of the most advanced and innovative tools to speed and ensure blanket and mat installation:

- The “Rifle M100” staple gun (patent pending) is the most reliable cartridge stapling system on earth to ensure effective staple placement. Constructed of steel

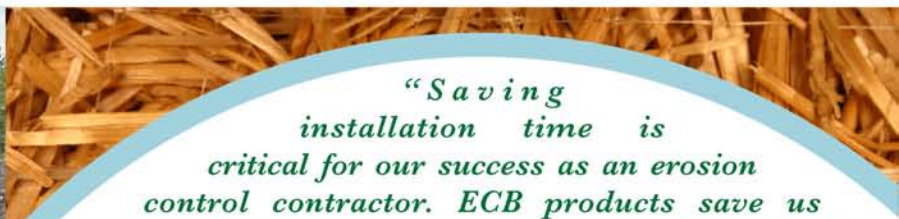
with an open design, the Rifle makes getting staples in and out as easy as 1-2-3, whether installing erosion control blankets, turf reinforcement mats, erosion control netting, or geotextile fabrics.



- The precision of the “Factor M” cartridge staples, along with a thinner yet stiffer wire, allows for rapid penetration of the staple -- even through ice and frozen ground. With 100 staples per load you save an amazing amount of time not having to reload or install single staples by hand.

- To further improve rolled erosion controlled product installation, we created the Mechanical Unrolling Device (MUD). The MUD is simply pulled behind an ATV, tractor, truck or anything with a 2-inch ball hitch. Even an 800 square yard, 400 pound Big Daddy roll is a cinch for one person!

By combining the innovation of the MUD, Rifle, and Factor M cartridge staples, ErosionControlBlanket.com provides the perfect tools for contractors who need to ensure quick, accurate, and effective product installation.



*“Saving installation time is critical for our success as an erosion control contractor. ECB products save us substantial time because of the size of product, packaging, ease of roll out and quality. When we need to get the job done fast, we get it done with ErosionControlBlanket.com.”*

Keith Porter | Mid Canada Hydroseeding

ULTRA SHORT TERM ≤ 3 MO.



**S32UVD**

- C** : weed free 100% golden spring wheat sewn together with 2 UV degradable polypropylene nets with rapid degradable UV thread  
1/2 lb/sy (270g/m<sup>2</sup>) weight
- P** : slopes ≤ 2:1 (h:v)  
channels 1.75 lbs/ft<sup>2</sup> (84 Pa)

- |   |  |
|---|--|
| <b>W</b> : 2.44m (8 ft) 4.88m (16 ft)                 | 2.44m (8 ft) 4.88m (16 ft)                 |
| <b>L</b> : 34.3m (112.5 ft) 34.3m (112.5 ft)          | 137.2m (450 ft) 137.2m (450 ft)            |
| <b>A</b> : 83.61m <sup>2</sup> (100 yd <sup>2</sup> ) | 334.4m <sup>2</sup> (400 yd <sup>2</sup> ) |
| 167.23m <sup>2</sup> (200 yd <sup>2</sup> )           | 668.8m <sup>2</sup> (800 yd <sup>2</sup> ) |
| <b>WT</b> : 24kg (52 lb) 48kg (104 lb)                | 96kg (208 lb) 192kg (416 lb)               |



**ECB** IS THE FIRST MANUFACTURER  
IN NORTH AMERICA TO OFFER A  
16 FOOT WIDE ROLL. AND OUR  
EXPERIENCE IS PASSED ON TO YOU.

## BIG DADDY

**EVERY DAY** you race against the elements to get the job done in a timely and productive way. With a 4-inch core for easy unrolling, the Big Daddy was developed to get the job done quickly. Big Daddy rolls are perfect for slopes and channel application -- in a big way!

### Your Advantage

In addition to saving material cost, the 16 foot blanket reduces overlap and installation time which lowers operational cost. Therefore, buy LESS blanket to cover the same area. Save over 1.5 cents per square yard from simply using a 16 versus narrower blankets.

### Easy to Handle

Packaging and stiffness of rolls allow for ease of handling with machines and one man operation. Roll out up to 1000 square yards with one kick!

IN ORDER TO ENSURE A CONSISTENT HIGH-QUALITY BLANKET, THE ECB TEAM:

- USES ONLY TOP GRADE SUMMER GOLDEN WHEAT STRAW
- UTILIZES THE MOST ADVANCED TECHNOLOGY AND PRODUCTION MACHINERY IN OUR MANUFACTURING FACILITIES
- TESTS PRODUCTS IN THE LAB AND IN THE FIELD
- ANY PRODUCT THAT DOES NOT MEET OUR QUALITY STANDARD IS DISCARDED, NEVER SOLD



### THE 16 FOOT BLANKET ADVANTAGE

Half the overlap • Half the time  
Easier than you think

*"We prefer to use their 16 foot blanket when we can as it handles well, there's less waste due to overlap and our production rate increases substantially.*

Don Grandahl | Sherbrook Turf. Pelican Rapids, Minnesota

available in: S31, one-sided straw • S32, two-sided straw  
SC32, 70% straw and 30% coconut  
C32, 100% coconut  
(UVD-Rapid Degradable also available)

*Easy to INSTALL*  
*Easy to HANDLE*  
*Easy to TRANSPORT*

## SEDIMENT CONTROL



# THE STENLOG

temporary sediment control device



AVAILABLE IN 6,  
9 AND 12 INCH  
DIAMETERS.

- THE STENLOG, USED AS A TEMPORARY PHOTODEGRADABLE SEDIMENT CONTROL DEVICE, IS NOT ONLY EASY TO INSTALL, IT REQUIRES LITTLE MAINTENANCE.
- THE STENLOG IS DESIGNED TO TRAP SEDIMENT ON SLOPES AND CHANNELS -- ELIMINATING THE COST OF CLEAN OUT ASSOCIATED WITH SILT FENCE.
- THE 6-INCH STENLOG ALLOWS FOR MOWING IN ROUGH CUT AREAS, SUCH AS DITCHES, WHERE SILT FENCE GETS IN THE WAY.
- THE STENLOG, CONSIDERED THE SEDIMENT SPILL KIT, IS A MUST FOR EVERY JOB AND EVERY CONTRACTOR WHO IS ENVIRONMENTALLY- AND REGULATION-CONSCIOUS.



distributed by:

Avery label #5262  
1 1/3" x 4"



**Erosion Control**  
**BLANKET**

Highway 8 & Vidor Line Road  
Riverton, Manitoba RoC 2RO Canada  
phone: 204-378-2142

**toll free phone: 866-280-RECP (7327)**

toll free fax: 866-757-RECP (7327)  
info@erosioncontrolblanket.com

**www.erosioncontrolblanket.com**  
**www.ecb.ca**