

**INSTALL WITH CONFIDENCE**



# **GEOSYNTHETIC**

## **Liners & Covers**

**RAVEN**  
INDUSTRIES

[www.rufco.com](http://www.rufco.com)

## THE RAVEN GEOSYNTHETIC LINE-UP

Since 1970, Raven Industries' geosynthetic liners and covers have captured the attention of environmental agencies, specifying engineers, and state and federal agencies nationwide.

Raven products are built in the Midwest, where pride for quality craftsmanship is second-to-none. Our vision is to make great products that meet or exceed our customers' requirements and we do that through the guidelines of our certified ISO 9001:2000 management program.

Our 300,000 sq. ft. manufacturing facility located in Sioux Falls, SD is equipped with the very latest state-of-the-art process equipment. Capabilities include 7-layer blown sheeting capabilities, lamination of tough reinforced materials as well as large factory welded panels up to 90,000 sq. ft.

A modern, well-equipped testing laboratory, in addition to ongoing research and development, assure continuous improvements and innovation in geomembrane liners and covers.

Our geosynthetic line consists of a wide range of products designed to meet your individual requirements from liquid containment to gas barriers to long-term covering applications.

Major applications include landfill covers, daily landfill covers, rainshed covers, remediation covers, golf course pond liners, canal liners and many more.



## PRODUCTS

### **RUFKO 1000 Series** **Extruded (Mono-Layer)**

Rufco 1000 Series is a very flexible geomembrane. Linear low-density polyethylene resin provides high elongation, tremendous tear resistance and bursting strength. These are very flexible materials that will conform to almost any surface. Rufco 1000 Series products are available in 20 mil up to 40 mil thicknesses and in widths up to 200' or up to 50,000 square-foot panels (20 mil).

### **RUFKO 10 Series** **Extruded (Mono-Layer)**

Mono-layer blended, Rufco 10 Series membranes consist of medium-density polyethylene. Manufactured from virgin and select reprocessed resins, they are designed to provide a high quality yet economical geomembrane. Available in thicknesses from 6 mil up to 20 mil and in widths up to 200' wide or up to 90,000 square-foot panels.

### **DURA-SKRIM J-Series** **1300 Denier Polyester Reinforced**

Dura-Skrim J30, J36 & J45 are Linear Low Density Polyethylene geomembranes reinforced with a heavy encapsulated 1300 Denier polyester reinforcement. In addition to excellent dimensional stability, the Tri-directional reinforcement provides exceptional tear and tensile strength. Dura-Skrim J-Series membranes are formulated with thermal and UV stabilizers to assure a long service life. Custom colors are available based on minimum volume requirements.

### **DURA-SKRIM Series** **Extrusion Laminated (4 & 7 Layers)**

Dura-Skrim Series products are manufactured using layers of high-strength polyethylene and bonding layer(s) of molten polyethylene. Heavy polyester scrim reinforcement is placed between these plies to greatly enhance tear resistance and increase service life. This results in a strong, light-weight construction that is excellent for use as a cover or liner in many conditions. The Dura-Skrim Series is manufactured in panels up to 90,000 square feet. Thickness ranges from 6 mil up to 20 mil. Super stabilized Dura-Skrim covers, meeting GRI-GM22 standard specifications, are also available for exposed application requiring a life expectancy of 5 years or more.

**RUFKO 1000 Series**



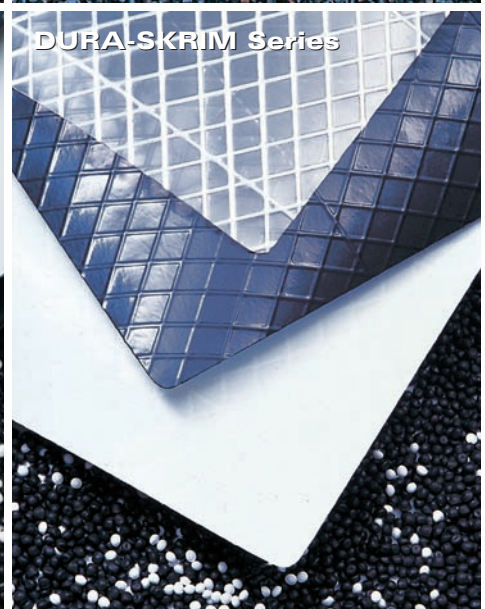
**RUFKO 10 Series**



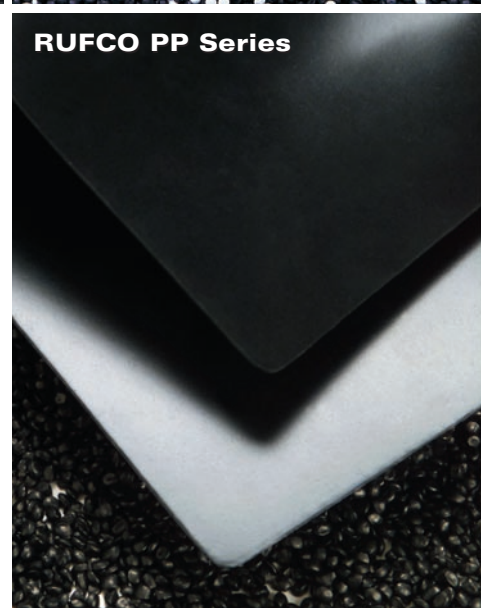
**DURA-SKRIM J-Series**



**DURA-SKRIM Series**



**RUFKO PP Series**



### **RUFKO PP Series** **Extruded (Mono-Layer)**

Rufco PP Series products are exceptionally flexible geomembranes that incorporate high levels of ethylene propylene rubber into polypropylene. These membranes provide outstanding resistance to environmental stress cracking even at elevated temperatures and in aggressive chemical environments. The Rufco PP Series is available in thicknesses of 30 and 40 mil, and in panels up to 33,000 square feet.

## UNEQUALED INSTALLATION TIME

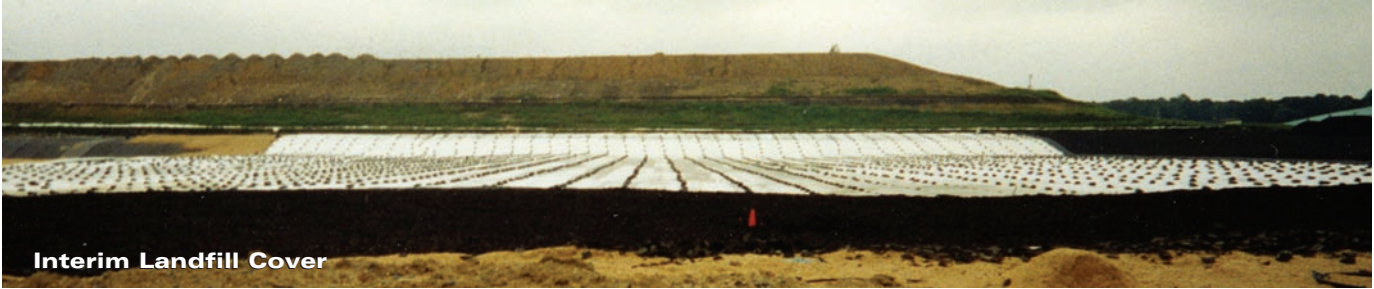
All products are available in large accordion-folded and rolled, factory-welded panels to greatly reduce installation time. A heavy-duty 6" diameter core approximately 81" in length is all that's required to package finished panels up to 300' in width. This makes transportation and handling easier in the field and eliminates the need for field seaming.

### What's the advantage for you?

Our geosynthetic liners and covers can easily and economically fulfill a variety of lining needs and reduce costly installation time. Whether you're involved in geomembrane installation, soil erosion control or soil remediation, you'll be able to meet government regulations, be profitable and meet deadlines.



# How are Raven Geosynthetics used?



Interim Landfill Cover



Water Filtration Pond



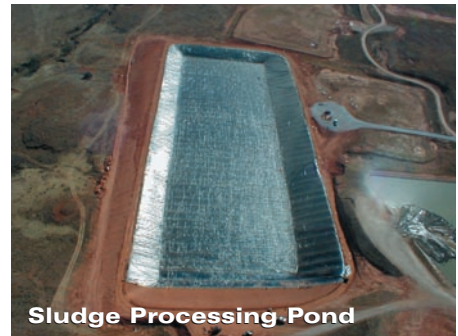
Water Holding Pond



Water Storage Facility



Golf Course Water Trap



Sludge Processing Pond

## RUFKO 1000 Series

### Unsupported LLDPE

- Landfill Caps
- Canal Linings
- Brine Ponds
- Oilfield Pitliners
- Mine Tailing Ponds
- Decorative Ponds
- Farm Ponds
- Irrigation Reservoirs
- Shrimp & Fish Ponds
- Leachate Collection Ponds
- Waste Water Ponds
- Secondary Containment

## RUFKO 10 Series

### Unsupported LLDPE

- Decorative Ponds
- Oilfield Pitliners
- Ditch Linings
- Fire Ponds
- Brine Ponds
- Farm Ponds
- Canal Linings
- Shrimp & Fish Ponds

## DURA-SKRIM Series

### Reinforced LLDPE

- Daily Landfill Covers
- Remediation Liners
- Remediation Covers
- Rain Shed Covers
- Pitliners
- Vapor Retarder
- Erosion Control Covers
- Stock Pile Covers
- Pond Liners
- Interim Landfill Covers

## DURA-SKRIM J-Series

### Reinforced LLDPE

- Waste Lagoon Liners
- Floating Covers
- Tunnel Liners
- Remediation Liners
- Earthen Liners
- Interim Landfill Covers
- Remediation Covers
- Landfill Caps
- Erosion Control Covers
- Radon Barrier
- Methane Barrier
- Fish Hatcheries
- Canal Liners
- Disposal Pit Liners
- Water Containment Ponds
- Heap Leach Liner

## RUFKO PP Series

### Unsupported PP

- Canal Linings
- Decorative Ponds
- Landfill Caps
- Waste Ponds
- Golf Course Water Traps
- Brine Ponds
- Aquaculture Ponds
- Evaporation Ponds
- Mine Tailing Ponds
- Fire Ponds
- Remediation Liners
- Farm Ponds
- Fish Hatcheries

# GEOSYNTHETIC

## Liners & Covers

Raven sales and engineering professionals support and understand the critical demands of the geosynthetic industry.

Our modern, fully-equipped testing laboratory provides quality assurance testing. Each production run must meet strict internal standards which assure continued quality manufacturing and fabrication.

Our facility is ISO 9001:2000 certified to help us assure complete customer satisfaction and continual improvements.

### ABOUT US

Founded in 1956, Raven Industries is a diverse, publicly-held company. The corporation consists of Electronics, Engineered Films, Flow Controls and one wholly-owned subsidiary, Aerostar International. Through these divisions and subsidiary, we have established a well-known reputation for manufacturing and supplying high-quality products to major markets throughout the United States and abroad.

Raven Industries Flexible Films Department offers a variety of specialty geosynthetics for industrial and commercial uses. Each product is engineered and manufactured for top performance and distribution nationwide.

**R A V E N**  
**I N D U S T R I E S**

**Plant Location:**  
Sioux Falls, SD

**Sales Office:**  
P.O. Box 5107  
Sioux Falls, SD 57117-5107  
Ph: (605) 335-0174  
Fx: (605) 331-0333  
Toll Free: (800) 635-3456  
[www.rufco.com](http://www.rufco.com)